

600 W. SPRING STREET  
COLUMBUS, OH 43215



OFFICE FOR LEASE  
20,000 SF Available

EXCELLENT SIGNAGE OPPORTUNITY

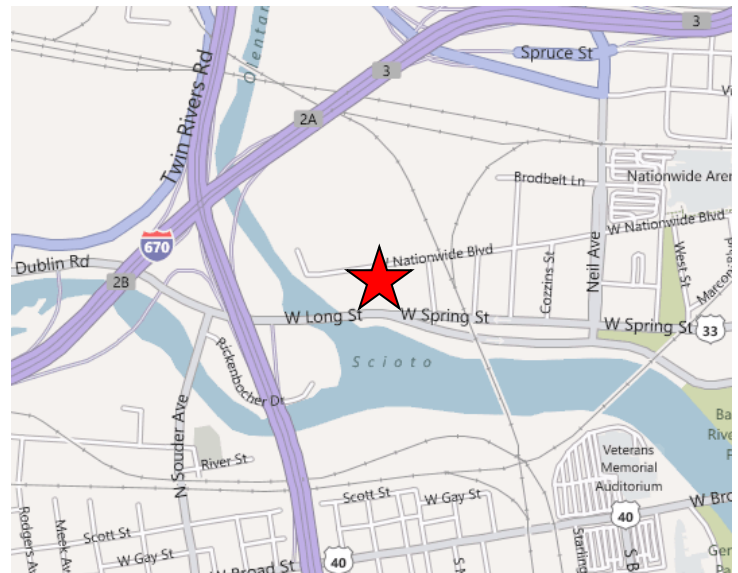


### OVERVIEW

PREMISES	20,000 SF
AVAILABLE	20,000 SF
ASKING RATE	Negotiable

### PROPERTY FEATURES

- Unique two story office building with excellent signage opportunity
- Close proximity to Downtown, Arena District and Huntington Park
- Easy access to I-670, SR 315, I-71 and Dublin Road
- Affordable on-site parking
- Professionally managed



For more information, please contact:

**WAYNE HARER, SIOR, CCIM**  
Executive Vice President  
(614) 883 1051  
wharer@continental-realty.com

**KEN ISENBARGER, SIOR**  
Senior Vice President  
(614) 883 1044  
kisenbarger@continental-realty.com

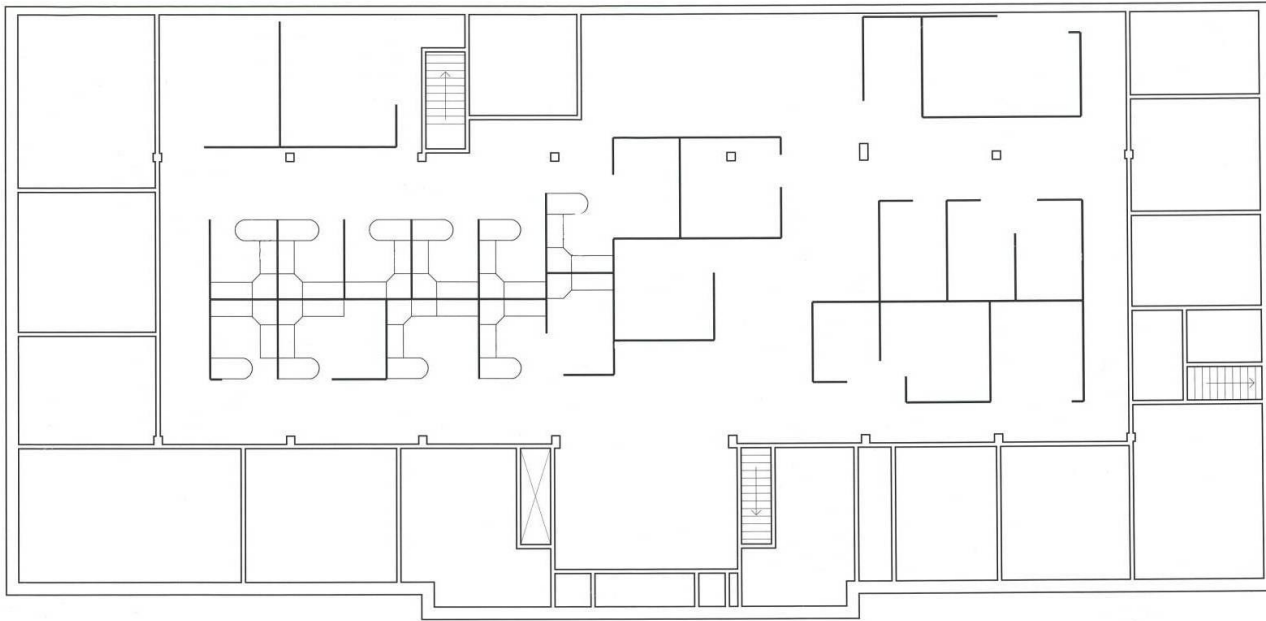
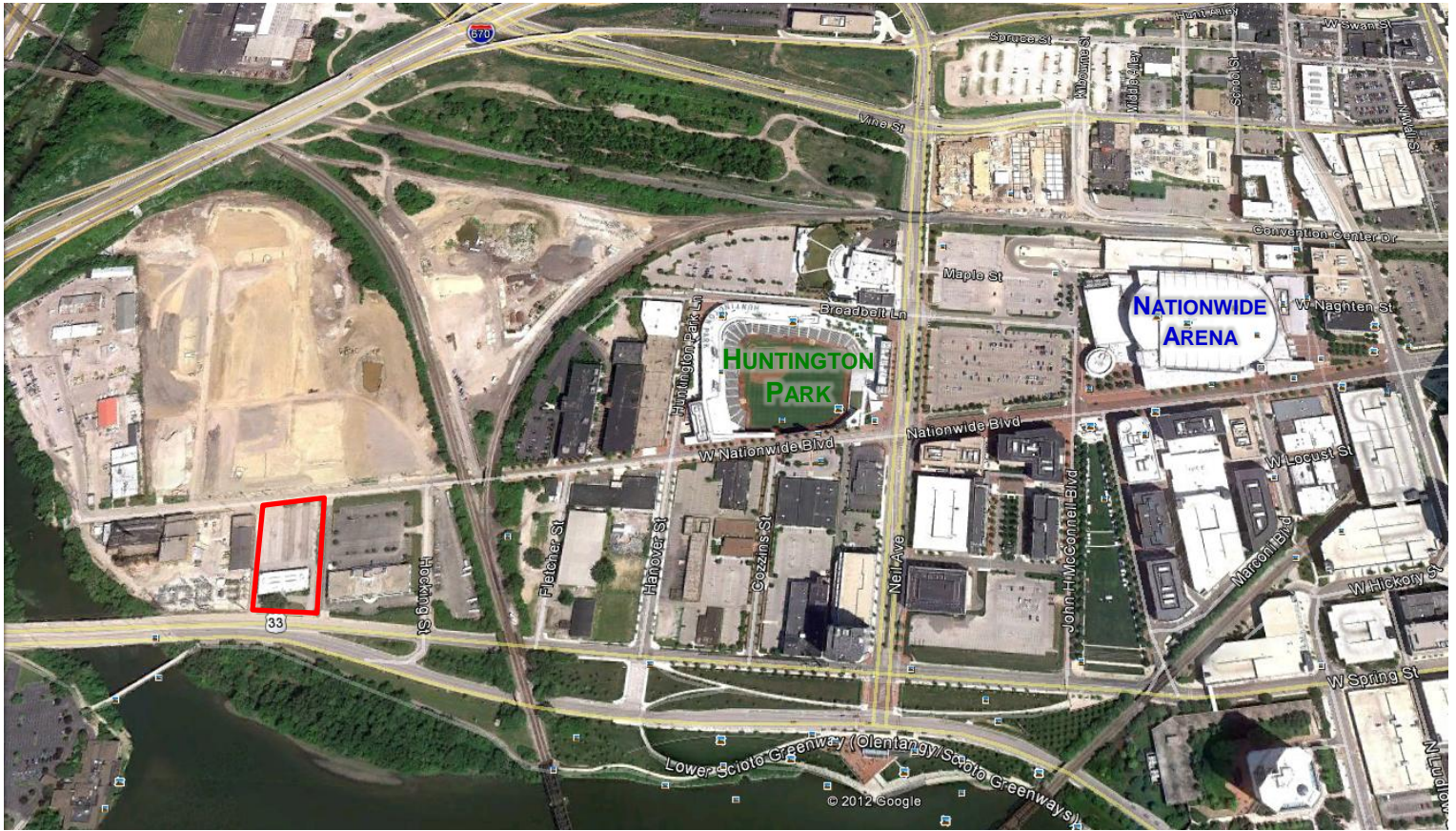
**CONTINENTAL REALTY /  
CUSHMAN & WAKEFIELD ALLIANCE**  
150 E. Broad Street, Suite 500  
Columbus, OH 43215  
www.continental-realty.com

The depiction in the included photograph of any person, entity, sign, logo or property, other than Continental Realty's (CR) client and the property offered by CR, is incidental only, and is not intended to connote any affiliation, connection, association, sponsorship or approval by or between that which is incidentally depicted and CR or its client. This listing shall not be deemed an offer to lease, sublease or sell such property; and, in the event of any transaction for such property, no commission shall be earned by or payable to any cooperating broker except if otherwise provided pursuant to the express terms, rates and conditions of CR's agreement with its principal, if, as and when such commission (if any) is actually received from such principal. (A copy of the rates and conditions referred to above with respect to this property is available upon request.)

# 600 W. SPRING STREET

Office for Lease

20,000 SF  
AVAILABLE



For more information, please contact:

**WAYNE HARER, SIOR, CCIM**  
Executive Vice President  
(614) 883 1051  
wharer@continental-realty.com

**KEN ISENBARGER, SIOR**  
Senior Vice President  
(614) 883 1044  
kisenbarger@continental-realty.com

**CONTINENTAL REALTY /  
CUSHMAN & WAKEFIELD ALLIANCE**  
150 E. Broad Street, Suite 500  
Columbus, OH 43215  
www.continental-realty.com

The depiction in the included photograph of any person, entity, sign, logo or property, other than Continental Realty's (CR) client and the property offered by CR, is incidental only, and is not intended to connote any affiliation, connection, association, sponsorship or approval by or between that which is incidentally depicted and CR or its client. This listing shall not be deemed an offer to lease, sublease or sell such property; and, in the event of any transaction for such property, no commission shall be earned by or payable to any cooperating broker except if otherwise provided pursuant to the express terms, rates and conditions of CR's agreement with its principal, if, as and when such commission (if any) is actually received from such principal. (A copy of the rates and conditions referred to above with respect to this property is available upon request.)