

Ohio Moline Plow Building

343 Front Street Leasing Opportunities



Built in 1913 and renovated in 1998, the Ohio Moline Plow Building was adapted to fit the needs of modern office and restaurant space while maintaining the structure's historic integrity.

The interior features creative spaces in a loft atmosphere with 12' ceilings and large barbell-shaped columns throughout. The building was added to the National Register of Historic Places in 1998.

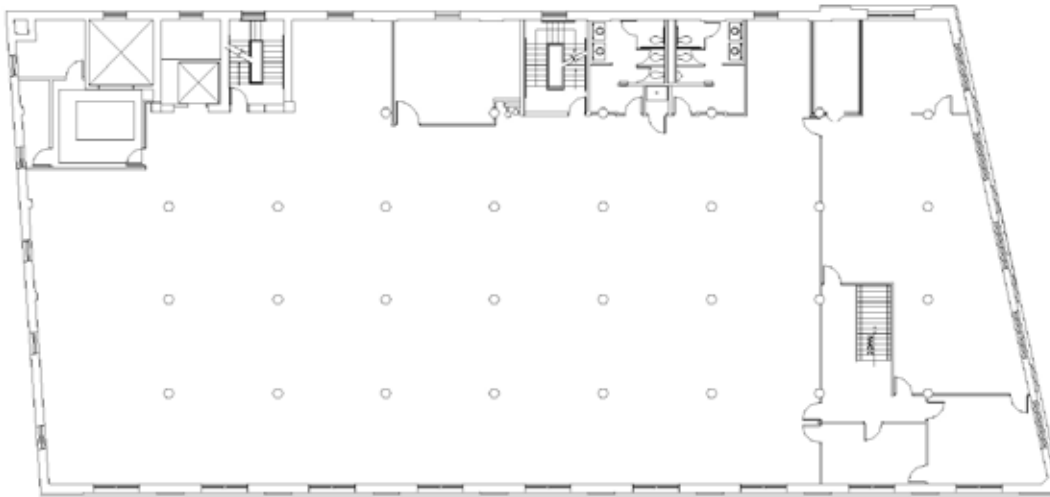
The Arena District is one of the country's premier office, sports, dining and entertainment destinations, with 1.5 million square feet of Class A office space, 300,000 square feet of retail, restaurant and entertainment venues, and 900 residential units. Nationwide Arena, Huntington Park, the LC Pavilion, the Greater Columbus Convention Center, multiple hotels, a movie theatre, an athletic club, and bars and restaurants attract 2.75 million visitors annually. Home to many of Columbus' most prominent businesses, the vast amenities of the Arena District continue to attract the cities' top talent.

Moline Plow Building Highlights:

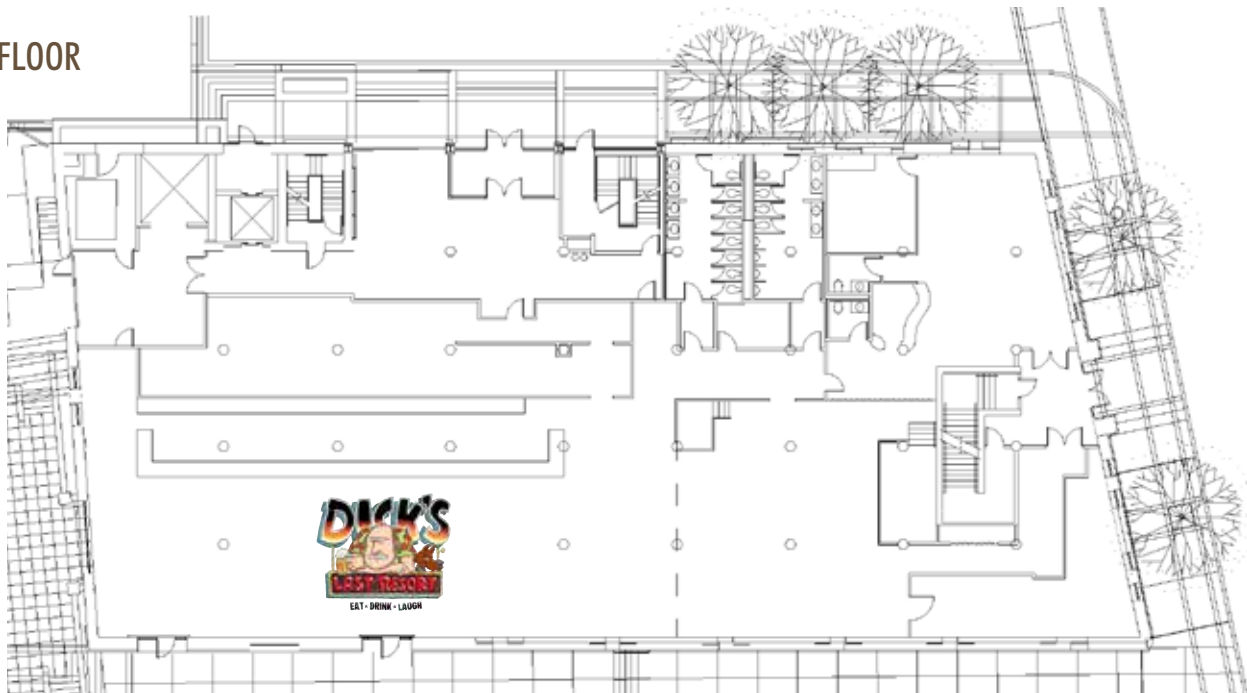
- Class A office and prime retail and restaurant space available
- Single or multi-tenant space in a range of sizes and configurations
- 54,000 total RSF on 4 floors
- Open loft-style floor plans with 12' high ceilings and large columns throughout
- Patio space available for first floor retail/restaurant use
- Exterior signage opportunities available
- Ample covered and surface parking nearby
- Prominent location adjacent to Nationwide Arena

www.arenadistrict.com

SECOND, THIRD AND FOURTH FLOORS - 13,942 RSF



FIRST FLOOR



BASEMENT LEVEL



Arena District is owned and developed by Nationwide Realty Investors

375 North Front Street, Suite 200
Columbus, Ohio 43215
(614) 857-2330
www.nationwiderealtyinvestors.com

For leasing opportunities, contact:



150 East Broad Street | Columbus, OH 43215
(614) 221-1800 | www.continental-realty.com

For office leasing opportunities contact:
Wayne Harer: wharer@continental-realty.com
Ken Isenbarger: kisenbarger@continental-realty.com

For retail leasing opportunities contact:
Steve Siegel: ssiegel@continental-realty.com

